

Φ25mm Aperture Split core current transformer



Front view



Opening view

Characteristic

- Opening and closing structure
- easy for installation
- Lead output
- Plate mounting

Product application

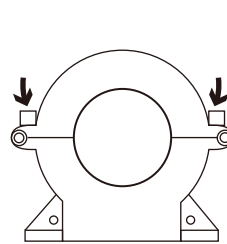
- Portable instrument
- Household metering
- Monitor motor load

Product advantage

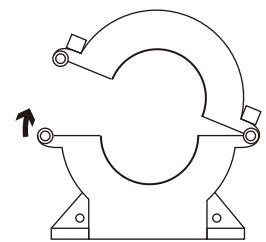
- Economic and practical
- Improve efficiency
- High cost performance

Installation diagram

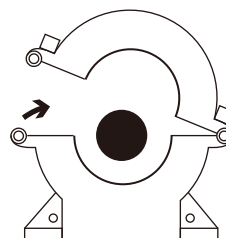
Primary threading method



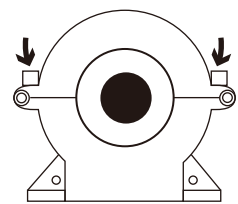
1. Unscrew the screw



2. Open up



3. In the lead



4. Buckle and screw

Typical technical index:

- Material of core——Silicon steel sheet
- Working voltage——Phase voltage $\leq 720V$
- Working temperature—— $-20^{\circ}C \sim +60^{\circ}C$
- Storage temperature—— $-25^{\circ}C \sim +65^{\circ}C$
- Frequency range—— $50Hz \sim 60Hz$
- Dielectric strength——output (outputbare conductor) AC 3.5KV/1min 5mA 50Hz
- Weight——204g

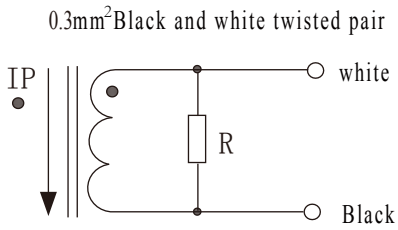
Electrical parameters: (The following parameters are typical values and actual values will be subject to product testing)

Can be made according to user requirements parameters

| | Input current A | Output current A | Rated output power VA | | | | number of turns |
|--------------|--------------------|---------------------|-----------------------|--------|--------|--------|-----------------|
| | | | 0.5grade | 1grade | 3grade | 5grade | |
| 1A Output | 50A | 1A | - | 1 | 2 | - | 1 |
| | 100A | 1A | 1 | 1.5 | 2.5 | - | 1 |
| | 200A | 1A | 1.5 | 2.5 | 5 | - | 1 |
| | 300A | 1A | 2 | 3.75 | 7.5 | - | 1 |
| | 400A | 1A | 2.5 | 3.75 | 7.5 | - | 1 |
| 5A Output | 100A | 5A | - | - | 2 | - | 1 |
| | 200A | 5A | - | 1.5 | 3.75 | - | 1 |
| | 300A | 5A | 1.5A | 2.5A | 3.75 | - | 1 |

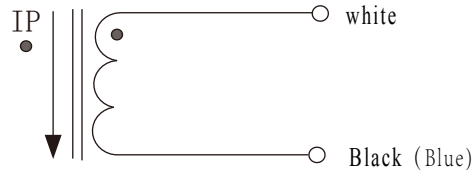
| | Input current A | Output voltage V | Accuracy % | Sampling resistor Ω | Load resistance $K\Omega$ | number of turns |
|------------------|--------------------|---------------------|---------------|-------------------------------|------------------------------|-----------------|
| 0.333V Output | 50A | 0.333V | 1% | built-in | $>10K\Omega$ | 1 |
| | 100A | 0.333V | | | | |
| | 200A | 0.333V | | | | |
| | 300A | 0.333V | | | | |
| | 400A | 0.333V | | | | |

Wiring diagram:



Voltage output type

Secondary are not allowed to short circuit



Current output type

secondary is not allowed to open the way

Cable:

Lead specification:

0.3mm²Black and white twisted pair wire

0.5mm²Black and white twisted pair wire

1.5mm²Blue and white soft wire

Lead color: white, Black(Blue)

Lead length: 1m

Instructions:

1.Primary threading direction: mark by arrow

2.Secondary output direction:

white line → black line

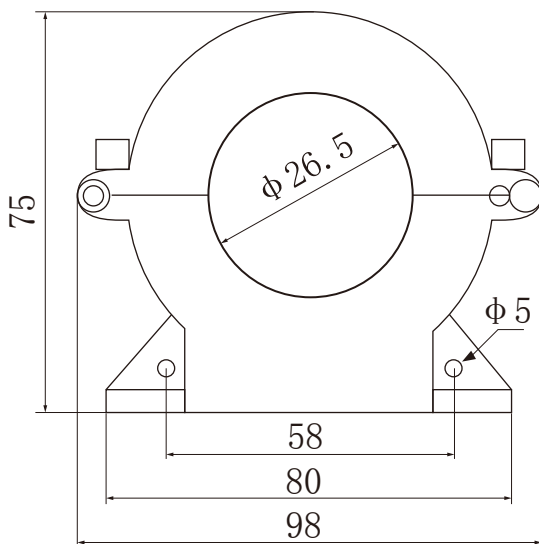
Note:

0.333V Output is 0.3mm²Black and white twisted pair

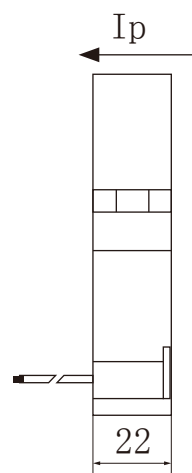
1A Output is 0.5mm²Black and white twisted pair

100/5~300/5 is 1.5mm²Black and white twisted pair

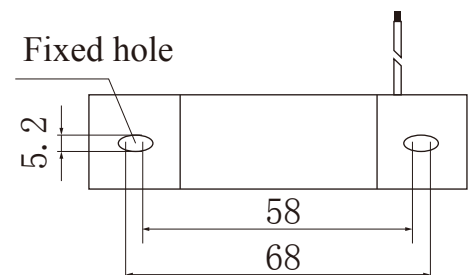
Outline size: (in:mm)



Front view



Side view



Bottom view