

# SCT036TS-D (DC voltage output type)



## Characteristic:

Safety lock clasp, easy installation.  
Built-in rectifier, screw terminal output.

## Technical index:

Mounting type: Free hanging (In-Line)  
Material of core: Laminated silicon steel  
Applicable standards: GB20840-2014  
Operating temperature:  $-25^{\circ}\text{C} \sim +60^{\circ}\text{C}$   
Storage temperature:  $-30^{\circ}\text{C} \sim +90^{\circ}\text{C}$   
Frequency range: 50Hz-1KHz  
Dielectric strength: 3.5KV 50Hz 1min

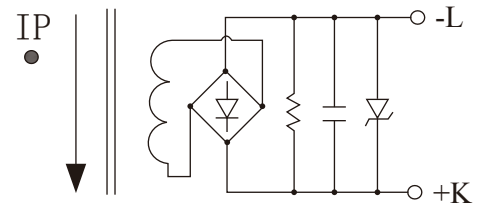
**Electrical parameters:** (The following parameters are typical values and actual values will be subject to product testing)

Input current	100	200	300	400	500	A
Output voltage	1/3/5					V/DC
Accuracy	2					%
Weight	310					g

Product picture : (the printed words are for reference only, subject to the actual product)

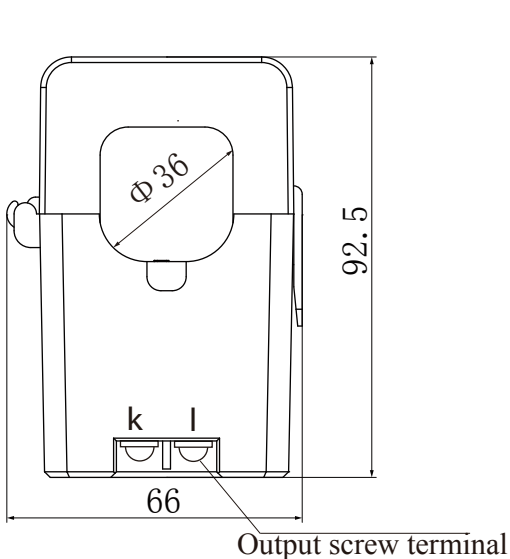


## Schematic diagram:

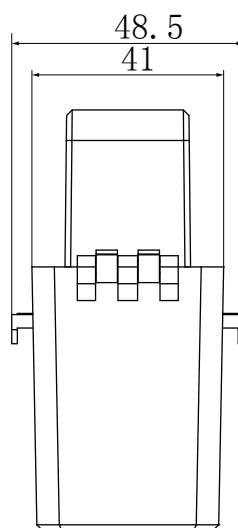


Voltage output type  
Secondary is not allowed to short circuit

## Dimensions (in mm $\pm 0.5$ ):



Front view



Side view

