

TA19E Primary core built-in type current transformer **YHDC**® 1992

Characteristics:

Primary coil built-in. Permalloy core, excellent linearity.
High accuracy, especially suitable for low current measurement application.

Product picture : (the printed words are for reference only, subject to the actual product)

Technical index:

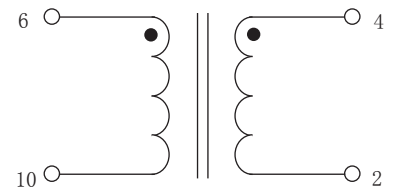
Mounting type: PCB
Material of the core: Permalloy
Flame resistance: UL94-V0
Execution standard: GB20840-2014
Operating temperature: -20°C ~ +70°C
Storage temperature: -30°C ~ +80°C
Frequency range: 20Hz-20KHz
Dielectric strength: 2KV 50Hz 1min



Electrical parameters: (The following parameters are typical values and actual values will be subject to product testing)

Model	TA19E-00	TA19E-01	TA19E-02	TA19E-03	TA19E-04	TA19E-05	Unit
Rated input	0.5	2.5	5	1	5	5	A
Rated output	1.25	2.5	2.5	1.5	1.67	1.25	mA
Turns ratio	5: 2000	2: 2000	1: 2000	3: 2000	1: 3000	1: 4000	
Linearity	≤0.1	≤0.1	≤0.1	≤0.1	≤0.1	≤0.1	%
sampling resistance	800	500	500	1000	900	1600	Ω
Weight	20						g

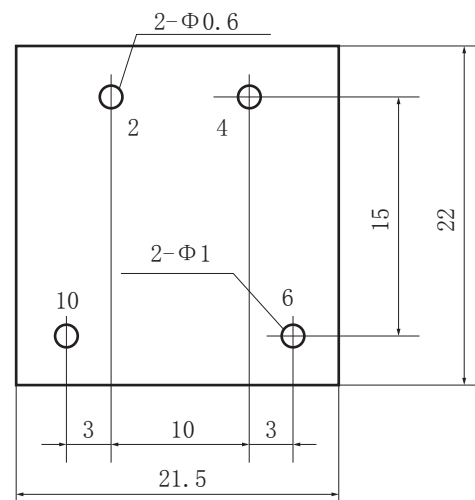
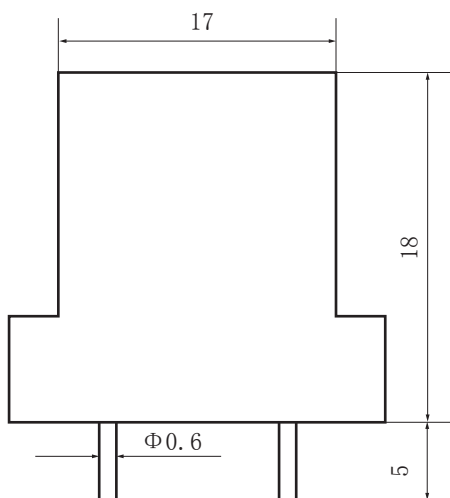
Schematic diagram:



current output type.

the secondary is not allowed to open.

Dimensions (in mm±0.5) :



Bottom View