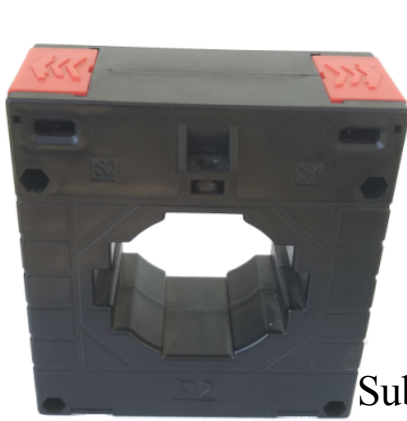


## Solid core power distribution current transformer



Front view



Quantity\*4

Sub-plate mounting



Quantity\*2

Platen mounting



Quantity\*2

35mmDin-rail mounting

Accessories drawing

Accessories drawing

Accessories drawing

### Product features

- Through cable or copper row
- Terminal output
- Three mounting methods for sub-plate/platen/parallel din-rail

### Product application

Current measurement, monitoring and protection of:

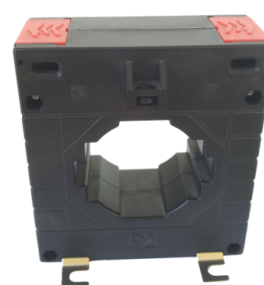
- AC motor
- Lighting device
- Complete cabinet
- Industrial network
- air compressors



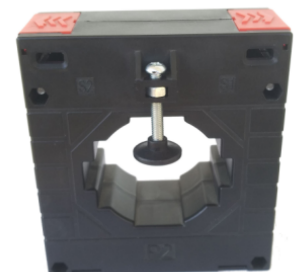
Din-rail mounting

### Product advantage

- Economical and practical, improve efficiency
- The terminal design has sufficient safety distance at both ends
- The end cap is a buckled structure with high mechanical strength
- Available in a variety of sizes (other models in the same series)



Sub-plate mounting



Platen mounting

**Typical technical index:**

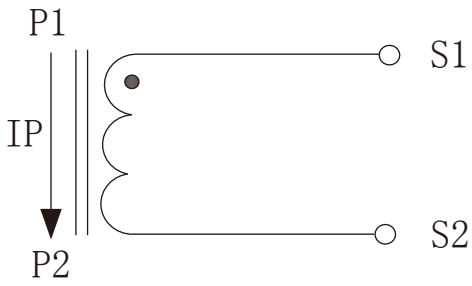
- Material of core——Silicon steel sheet
- Working voltage——Phase voltage  $\leq 720V$
- Working temperature—— $-20^{\circ}C \sim +60^{\circ}C$
- Storage temperature—— $-25^{\circ}C \sim +65^{\circ}C$
- Frequency range—— $50Hz \sim 60Hz$
- Fair resistance——UL94-V0
- Dielectric strength——Output/Outer shell AC 3.5KV/1min 5mA 50Hz
- Weight--854g

**Electrical parameters:** ( The following parameters are typical values and actual values will be subject to product testing )

**Can be customized parameters**

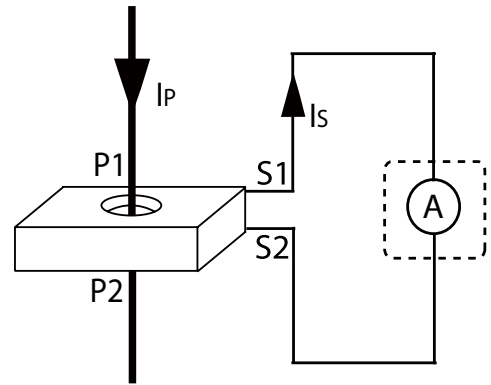
	Input current A	Output current A	Rated output powerVA					Number of turns
			0.2S grade	0.2 grade	0.5S grade	0.5 grade	1 grade	
0.1A Output	400A	0.1A	-	40	-	40	40	1
	500A	0.1A	-	40	-	40	40	1
	600A	0.1A	-	40	-	40	40	1
	750A	0.1A	-	40	-	40	40	1
	800A	0.1A	-	40	-	40	40	1
	1000A	0.1A	-	40	-	40	40	1
	1200A	0.1A	-	40	-	40	40	1
1A Output	200A	1A	-	-	-	3.75	7.5	1
	400A	1A	1.5	2.5	1.5	3.75	12.5	1
	500A	1A	2.5	5	2.5	12.5	15	1
	600A	1A	3.75	7.5	3.75	12.5	25	1
	750A	1A	3.75	12.5	3.75	15	25	1
	800A	1A	5	12.5	5	25	25	1
	1000A	1A	7.5	15	7.5	25	35	1
	1200A	1A	10	20	10	30	40	1
5A Output	200A	5A	-	-	-	3.75	7.5	1
	400A	5A	1.5	2.5	1.5	3.75	12.5	1
	500A	5A	2.5	5	2.5	12.5	15	1
	600A	5A	3.75	7.5	3.75	12.5	25	1
	750A	5A	3.75	12.5	3.75	15	25	1
	800A	5A	5	12.5	5	25	25	1
	1000A	5A	7.5	15	7.5	25	40	1
	1200A	5A	10	20	10	30	40	1

Wiring schematic diagram:

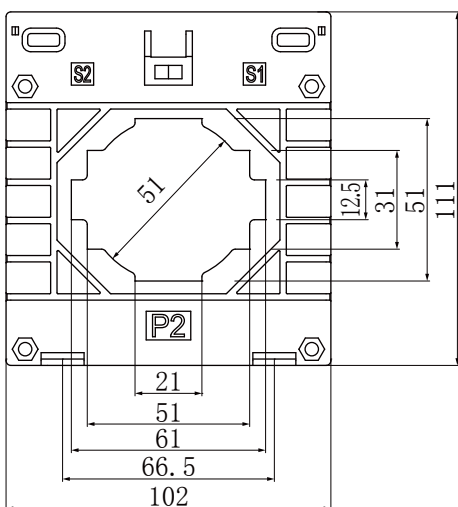


Current output type

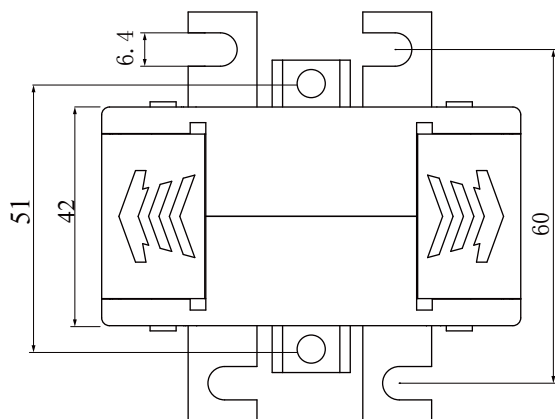
Secondary doesn't allow open circuit



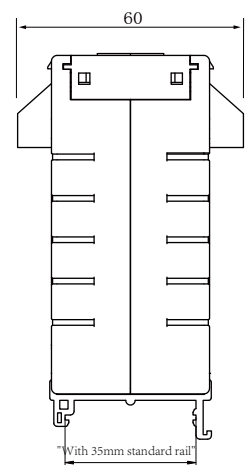
Outline size: (in:mm ± 0.5) :



Front view



Bent lug size View



Installation diagram of clamp rail