

HK4030-S1

YHDC®
1992

Detect DC, AC and pulse current, high insulation between primary side and the vice side circuit.

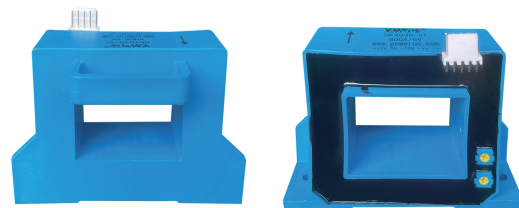
Product picture printing is for reference only, subject to the actual product

Product application

- Metallurgy
- Welding machine
- Robot
- Inverter power
- Inverter speed controller
- UPS uninterruptible power supply

Product features

- Light weight
- Low power consumption
- No insertion loss
- Fast response time
- Small size and beautiful appearance
- Sub-plate mounting and easy to use



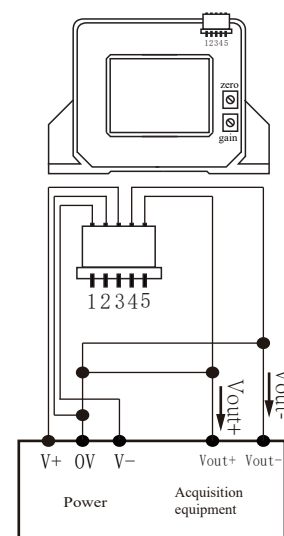
Electrical parameters: the following parameters are typical values, the actual values shall be subject to the actual measurement of the product

Rated input	±200A	±500A	±800A	±1000A	±1200A	±1500A
Input measurement range	±300A	±750A	±1200A	±1500A	±1800A	±2250A
Rated output	±5V					
Accuracy	1%					
Linearity	1%					
Supply voltage	±12V/±15V					
Current consumption	≤16mA					
Load impedance	≥10KΩ					
Zero offset voltage	≤±15mV					
Response time	≤5μs					
Weight	266g					
Operation temperature	-10℃~+70℃					
Storage temperature	-25℃~+70℃					
Band width	DC~25KHz					
Dielectric strength	4.5KV 50Hz 1min					

Terminal definition:

- 1: V+
- 2: 0V
- 3: V-
- 4: Vout-
- 5: Vout+

Wiring diagram:

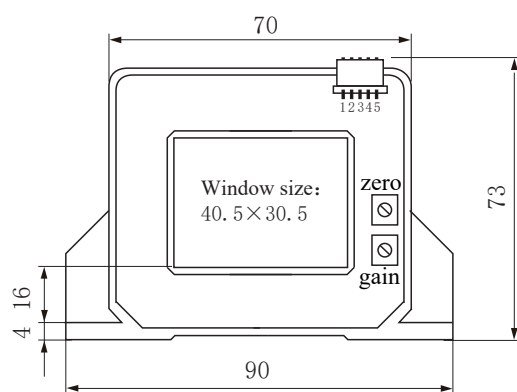


Connector :

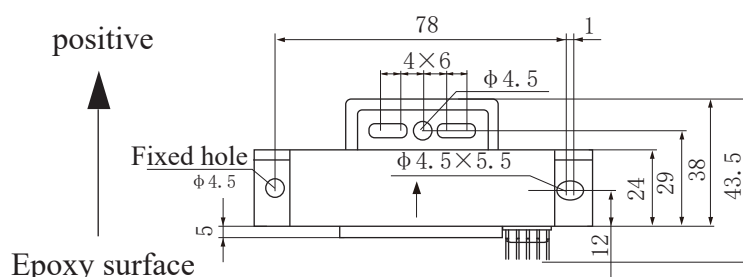


Cold-pressed terminal quick-connect plug, spacing 2.54mm 5P

Dimensions(in mm±0.5) :



Front view



Top view