

THST6416D



Detect DC current, high insulation between primary side and secondary side circuit.

Product application

- Metallurgical
- Welding machine
- Robot
- Inverter power supply
- Variable frequency governor
- Uninterrupted power supply and communication power supply

Product features

- Light weight
- Low power consumption
- No insertion loss
- Fast response time
- Small size and beautiful appearance
- Sub-plate mounting, easy to use

Product picture printing is for reference only, subject to the actual product

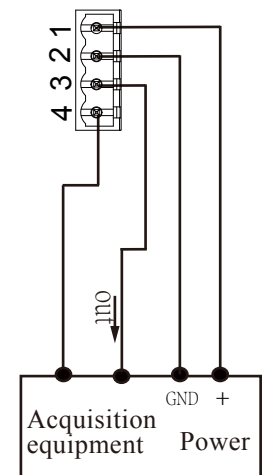


Electrical parameters: the following parameters are typical values, the actual values shall be subject to the actual measurement of the product

Rated input	100A	500A	800A	1000A	1500A	2000A
Input measurement range	120A	600A	960A	1200A	1800A	2400A
Rated output	0-20mA/4-20mA/0-5V/1-5V/0-10V					
Accuracy	1%					
Linearity	0.5%					
Supply voltage ($\pm 5\%$)	+12V / +24V					
Current consumption	$\leq 48\text{mA} + I_o$					
Load impedance	Current type output: 250 Ω (Typification)		Voltage type output: $\geq 10\text{K}\Omega$			
Zero offset	Current type output: $\pm 0.08\text{mA}$		Voltage type output: $\pm 15\text{mV}$			
Response time	$\leq 350\text{mS}$					
Operating temperature	$-10 \sim +70^\circ\text{C}$					
Storage temperature	$-25 \sim +70^\circ\text{C}$					
Band width	50Hz~400Hz					
Dielectric strength	6KV 50Hz 1min					
Weight	530g					

Note: Rated input current in 100A~2000A are standard
0-10V output must select +24V supply voltage

Schematic diagram:

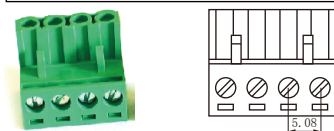


Terminal definition

- 1: V+
- 2: GND
- 3: Out
- 4: GND

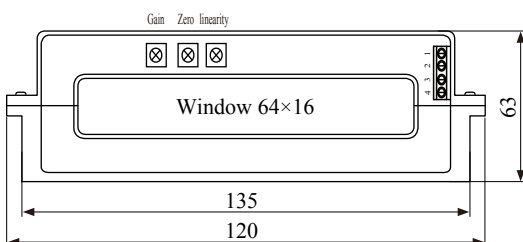
- ※① Selective ripple ($\leq 20\text{mV}$)
Stable auxiliary power supply
- ② Turn on auxiliary power
- ③ Auxiliary power supply transmitter.
- ④ Auxiliary power supply transmitter.
- ⑤ The two GND interior is not isolated

Connector Illustration:

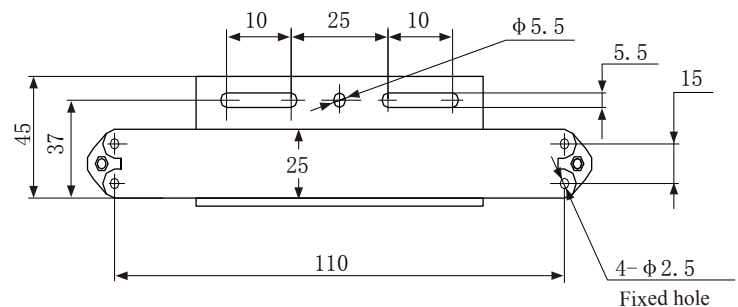


Crimping terminal quick plug: 2EDG-5.08-4p distance: 5.08mm

Dimensions(in mm ± 0.5) :



Front view



Bottom view