

TST325K



Split core type,din-rail or sub-plate mount,terminal output.
Detect AC current, high insulation between primary and secondary circuits.

Safety index:

Flame resistance: UL94-V0

Operating temperature: $-10^{\circ}\text{C} \sim +70^{\circ}\text{C}$

Storage temperature: $-25^{\circ}\text{C} \sim +70^{\circ}\text{C}$

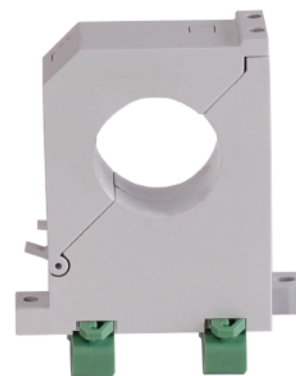
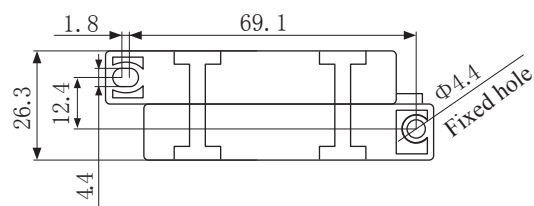
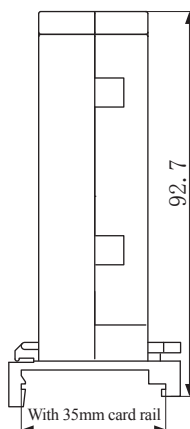
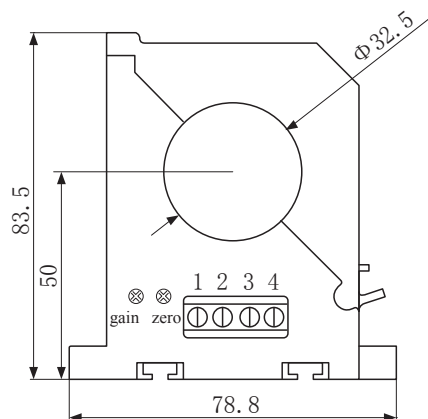
Dielectric strength: 2.5KV 50Hz 1min

Technical parameter:

Rated input	20A	50A
Input measurement range	24A	60A
Rated output	0-20mA/4-20mA/0-5V/1-5V/0-10V	
Accuracy	0.5%	
Linearity	0.5%	
Supply voltage	+12V/+24V	
Current consumption	$\leq 35\text{mA}$	
Load impedance	Current type output: 250 Ω (Typification)	Voltage type output: $\geq 10\text{K}\Omega$
Zero offset	Current type output: $\pm 0.08\text{mA}$	Voltage type output: $\pm 15\text{mV}$
Response time	$\leq 350\text{ms}$	
Weight	g	
Band width	25~1KHz	
Dielectric strength	2.5KV 50Hz 1min	

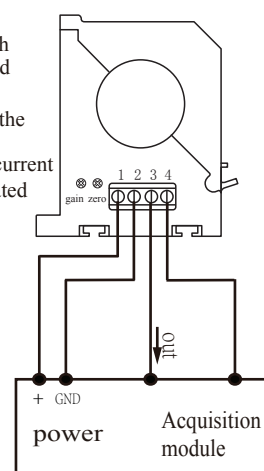
*0-10V output needs +24V power supply

Dimensions(in mm ± 0.5) :



Connection diagram:

- ※①The auxiliary power supply with ripple small ($\leq 20\text{mV}$) is selected
- ②Switch on auxiliary power
- ③Auxiliary power is connected to the transmitter
- ④Transmitter detects the primary current
- ⑤Both GND internals are not isolated



Terminal definition:

- 1:+V
- 2:GND
- 3:Output
- 4:GND

Connector:



Compression terminal quick plug,SY2EDGVC-5.08-04P-4
spacing5.08mm