

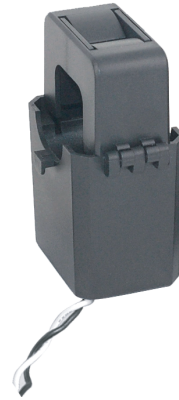
### Characteristic:

Safety lock buckle, easy installation, cable output.

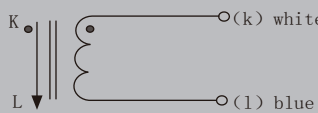
Product picture printing is for reference only, subject to the actual product

### Technical index:

Mounting type: Free hanging (In-Line)  
 Material of core: Laminated silicon steel  
 Applicable standards: GB20840-2014  
 Operating temperature: -25°C ~ +60°C  
 Storage temperature: -30°C ~ +90°C  
 Frequency range: 50Hz-60Hz  
 Dielectric strength: Input (bare conductor)/Output AC 800V/1min 50Hz  
 Output/housing AC 3.5KV/1min 50Hz



Electrical parameters: The following parameters are typical values. The actual values shall be subject to the actual measurement of the product

Rated input	100A		200A		300A		400A		500A		600A		Specifications of cable: 1mm <sup>2</sup> black and white twisted pair. The length of cable: 100cm~105cm  Current output type Secondary is not allowed to open circuit
Rated output	5A		5A		5A		5A		5A		5A		
Turns ratio	1:20		1:40		1:60		1:80		1:100		1:120		
Accuracy	1%	0.5%	1%	0.5%	1%	0.5%	1%	0.5%	1%	0.5%	1%		
Power	1VA	2VA	5VA	2VA	5VA	2VA	5VA	2VA	5VA	2VA	5VA		
Weight	310g												

### Dimension (in mm±0.5) :

