

Characteristics:

1. Vacuum epoxy resin encapsulated, 100°C /6 hours high temperature aging, long working life 20 years and with high dielectric strength.
2. High quality laminated silicon steel, low temperature rise, high efficiency
3. PBT engineering plastic, environmental protection, flame retardant, 120 degrees without deformation
4. Reasonable structure, easy installation, low noise, strong seismic, airtight waterproof, moisture-proof



Technical index:

Mounting type: Sub-plate mount

Flame resistance : UL94-V0

Insulation class: B

Operation temperature: -30°C ~ +40°C

Work frequency: 50Hz ~ 60Hz

Dielectric strength: Primary/secondary (Max) 25KV 50Hz 1min 20mA
Secondary 500V 50Hz 1min 5mA

Electrical parameters: (The following parameters are typical values and actual values will be subject to product testing)

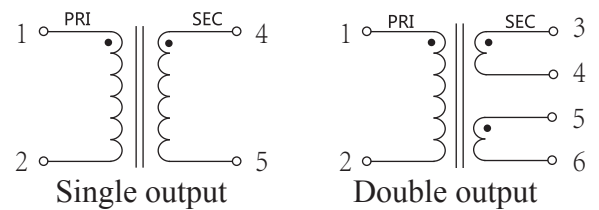
Primary operating voltage	1000V	1140V	2000V	3000V	4000V	Unit
Primary voltage range	± 10					%
(Output) Power	50					VA
Voltage regulation	≤ 12					%
Temperature rise	35					°C
No-load loss	2.5					W
Dielectric strength primary/secondary	25					KV
Weight	2133					g

Standard output parameter table:

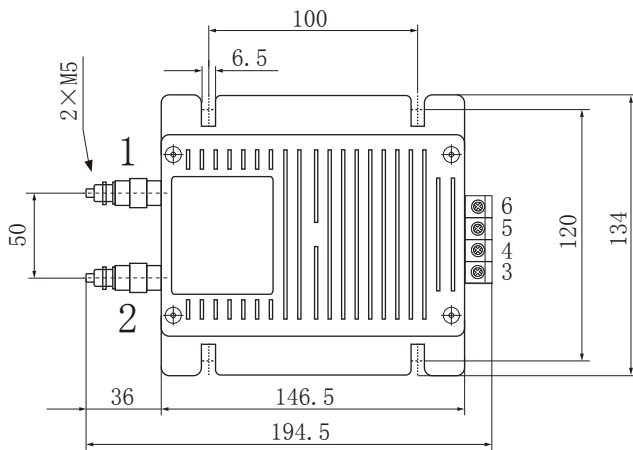
(Factory test is based on the full-load voltage)

Secondary voltage		Secondary no-load voltage		Secondary full-load current	
Single	Double	Single	Double	Single	Double
6V	2×6V	6.7V	2×6.7V	8.33A	2×4.17A
7.5V	2×7.5V	8.4V	2×8.4V	6.67A	2×3.33A
9V	2×9V	10V	2×10V	5.56A	2×2.78A
12V	2×12V	13.5V	2×13.5V	4.17A	2×2.08A
15V	2×15V	16.8V	2×16.8V	3.33A	2×1.67A
18V	2×18V	20.2V	2×20.2V	2.78A	2×1.39A
24V	2×24V	27V	2×27V	2.08A	2×1.04A

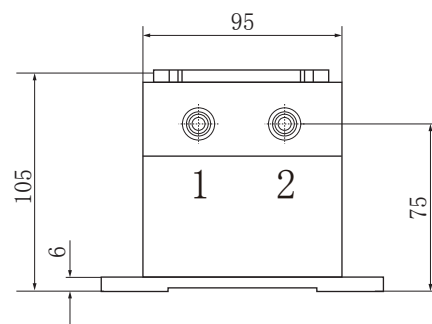
Schematic diagram:



Dimension (in mm±0.5) :



Front view



Top view