

# TEF7640



Patent number: ZL 2020 2 1000365.1

### Characteristics:

1. Vacuum epoxy resin encapsulated, 100 °C /6 hours high temperature aging, long working life 20 years and with high delectric strength
2. High quality H18 laminated silicon steel, low temperature, high efficiency
3. PBT engineering plastic, environmental protection, flame retardant, 120 degrees without deformation
4. Reasonable structure, easy installation, low noise, strong earthquake sealed waterproof, moistureproof

### Technical index:

Mounting type: Plate

Flame resistance : UL94-V0

Insulation class: B

Operation temperature: -30 °C ~+40 °C

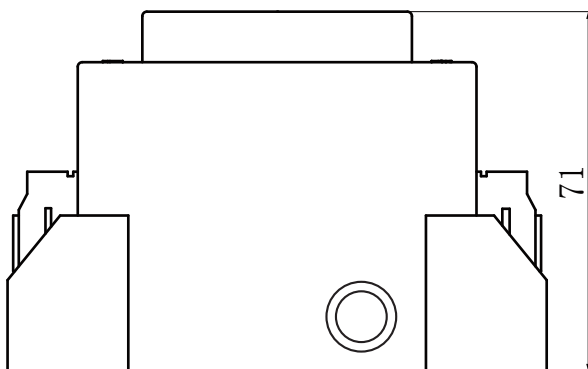
Work frequency: 50Hz~60Hz

Dielectric strength: Pri/Sec 3.75KV 50Hz 1min 5mA

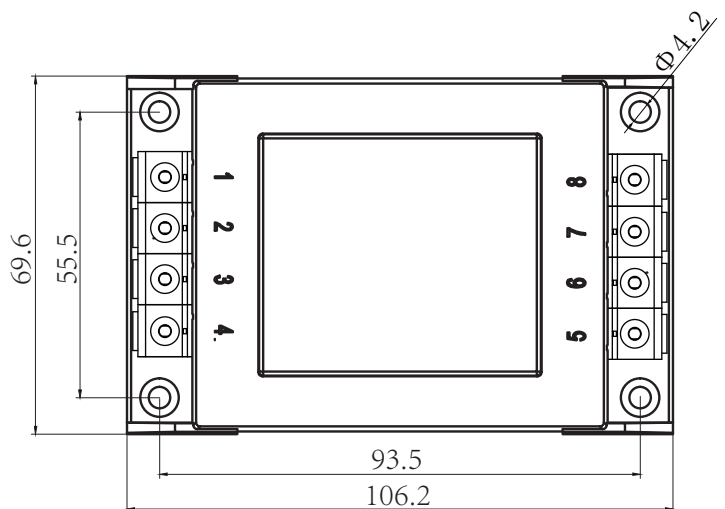
Electrical parameters: The following parameters are typical values. The actual values shall be subject to the actual measurement of the product

Primary voltage	110V	220V	230V	380V	Unit
Primary voltage range	± 10				%
Power	100				VA
Voltage regulation	≤ 10				%
Temperature rising	≤ 40				°C
No-load loss	≤ 3.5				W
Weight	1.8				kg

### Dimensions (in mm±0.5)



Front view



Top view

Product picture print for reference only, subject to the actual product

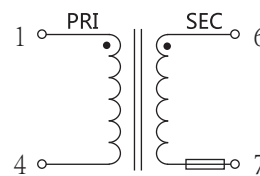


### Standard output parameter table:

( Factory test is based on the full-load voltage )

Secondary full-load voltage	Secondary no-load voltage	Secondary full-load current	Fuse
7.5V	8.25V	13.33A	15A (250V)
9V	9.9V	11.11A	12A (250V)
12V	13.2V	8.33A	10A (250V)
15V	16.5V	6.66A	7A (250V)
18V	19.8V	5.55A	6A (250V)
24V	26.4V	4.16A	5A (250V)

### Schematic diagram:



### Optional types of fuse

0.1A (250V)	0.2A (250V)	0.5A (250V)
1A (250V)	1.5A (250V)	2A (250V)
3A (250V)	3.15A (250V)	4A (250V)
5A (250V)	6A (250V)	6.3A (250V)
7A (250V)	8A (250V)	10A (250V)
12A (250V)	15A (250V)	