

AC current transducer(digital output)



Model:THST8422A-RS485

Square plug terminal output , sub-plate mounting type;The faulty wiring can lead to product damage:The output is linear with primary test current,The output signal can be connected to a digital acquisition device that supports the RS485 communication interface to realize data acquisition and processing.

Technical index:

Flame resistance: UL94-V0

Operating temperature: $-10^{\circ}\text{C} \sim +70^{\circ}\text{C}$

Storage temperature: $-40^{\circ}\text{C} \sim +85^{\circ}\text{C}$

Dielectric strength: 2.5KV 50Hz 1min

Waterproof level:IP00

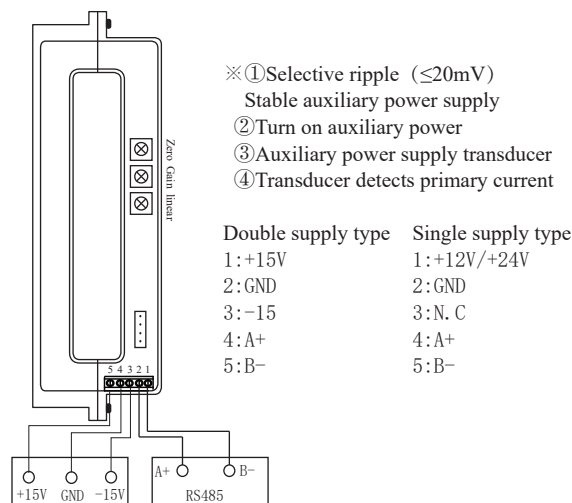


The picture is for reference only

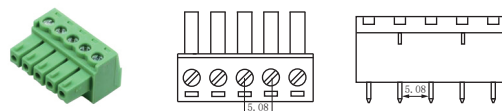
Electric parameters:

Diameter	□84*22
Rated input	500A~2000A
Measure range	$I_{pn} \times 120\%$
output	Hexadecimal digital measurement value
Power supply	+12V +24V $\pm 15V$
Accuracy	$\leq 1\%$
Linearity	$\leq 0.5\%$
Current consumption	$70\text{mA} + I_o$
Transmission distance	$\leq 50\text{m}$
Zero offset	$\pm 30\text{mV}$
Response time	$\leq 200\text{mS}$
Communication protocol	RS485 Modbus RTU
Baud rate	4800bps/9600bps/19200bps/38400bps/115200bps(optional)
Device address range	0X01~0XFF(optional)
Frequency	50~400Hz

Schematic diagram:

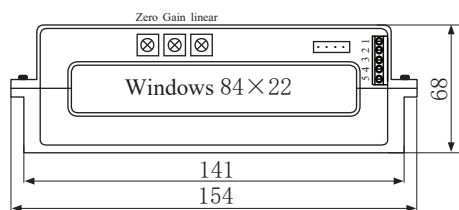


Connector schematic diagram:

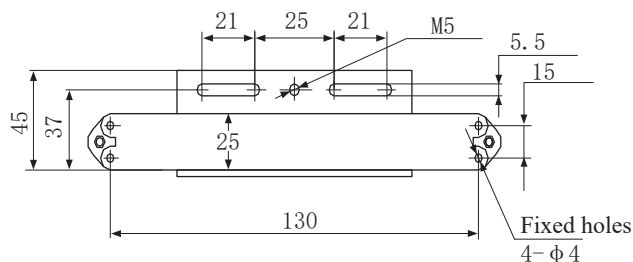


Crimping terminal quick-connect plug, 5.08-5P-Staight needle, Distance 5.08

Dimensions (in mm):



Front view



Bottom view