

Detect DC, AC and pulse current, high insulation between primary side and the vice side circuit.

**Product application**

- Metallurgy
- Welding mahine
- Robot
- Inverter power
- Inverter speed controller
- UPS uninterruptible power supply

**Product features**

- Light weight
- Low power consumption
- Beautiful appearance
- Fast response time
- No insertion loss
- Sub-plate mounting and easy to use

Product picture printing is for reference only, subject to the actual product



Electrical parameters:the following parameters are typical values, the actual values shall be subject to the actual measurement of the product

Rated input	±300A	±500A	±800A	±1000A	±1200A	±1500A
Input measurement range	±360A	±600A	±960A	±1200A	±1440A	±1800A
Rated output	2.5V±0.625V					
Rated input	±900A	±1000A	±1200A	±1300A	±1500A	
Input measurement range	±900A	±1000A	±1200A	±1300A	±1500A	
Rated output	2.5V±2V					
Accuracy	1%					
Linearity	1%					
Supply voltage	+5V±5%					
Current consumption	≤16mA					
Load impedance	≥10KΩ					
Zero offset voltage	≤±15mV					
Response time	≤5μs					
Weight	542g					
Operation temperature	-10°C~+70°C					
Storage temperature	-25°C~+70°C					
Band width	DC~10KHz					
Delectric strength	3KV 50Hz 1min					

Calculation formula:  $2.5V \pm 0.625V$  (or  $\pm 2V$ )

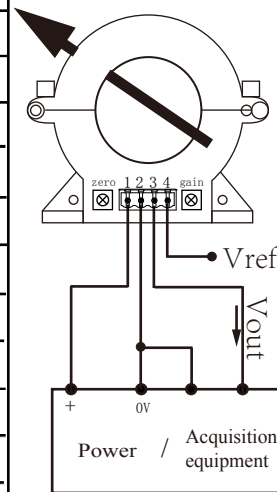
Forward direction:  $2.5 + (I/I_{PN}) * 0.625$  (or  $\pm 2$ )

Reverse direction:  $2.5 - (I/I_{PN}) * 0.625$  (or  $\pm 2$ )

I: Actual measured current

I<sub>PN</sub>: Rated input current

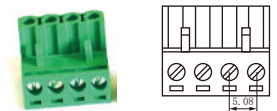
**Wiring diagram:**



**Terminal definition:**

- 1: V+
- 2: 0V
- 3: Vout
- 4: Vref

**Connector:**

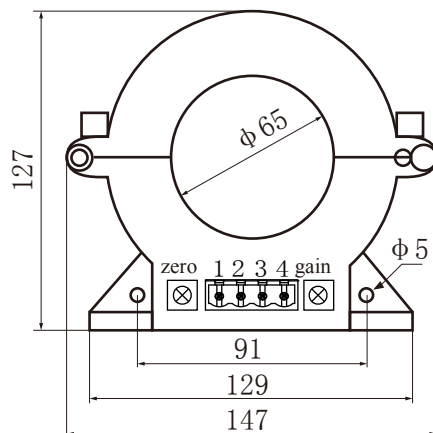


Crimping terminal fast plug  
2EDG-5.08-4p spacing 5.08mm

**Factory commissioning :**

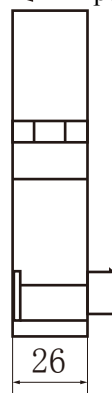
- 1.Debug with 0V as the reference point(acquiescence)
- 2.Debug with Vref as the reference point(optional)

**Dimensions(in mm±0.5) :**



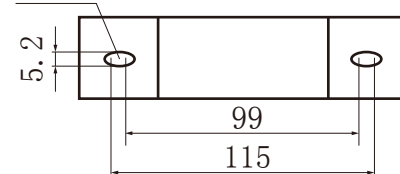
Front view

Current direction  
Print surface ← Epoxy surface



Side view

Fixed hole



Bottom view